

2013 DUKES' Day

FRESHWATER BEACH
AUSTRALIA



Duke's Paddle Challenge

12 January 2013

**SUPs, boards and surf skis are invited to take part in this Paddle ...
a 5km course out and back from Freshwater Beach taking in the sights across the
Freshwater –Manly – Fairy Bower World Surfing Reserve**

An integral part of Duke's Day this event is about participation and the soul of surfing.
Winners on the day earn bragging rights as Duke's Paddle Challenge winners.
All entrants are in the running for some fun prizes.

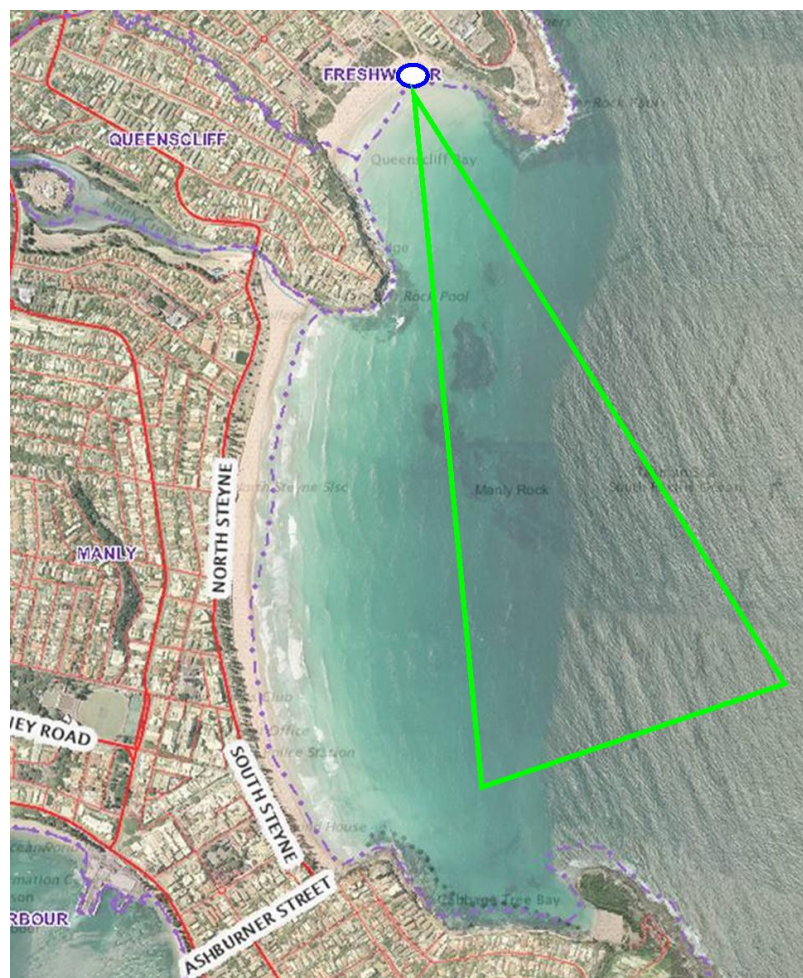
Paddle Categories

- Surf Ski and Ocean Racing Ski
- Paddleboards
- SUPs
- Outrigger Canoes

Entry is limited to the first 100 craft
Register at www.dukesday.com

Event Entry Fee \$25 payable on the day

Contact: info@dukesday.com



Event Rules

All entrants must:

- Be 18 years or older on 12 January 2013 to participate;
- Complete and sign a waiver on the morning of the event prior to participating;
- Wear the official Duke's Day water safety shirt during the event;
- Supply and wear own personal floatation device. PFDs are compulsory. Leg leashes are recommended and may be compulsory if the Race Director sees the need.

Note:

- The event is for SLSA specification surf skis, ocean racing skis, SUPs, outrigger canoes and paddle boards.
- The course description provided is subject to change by the Event Director.
- No entrant can participate without an approved PFD or leg leash. The minimum requirement is a PFD type three and must comply by Australian and Overseas standards.
- The organisers have a duty of care to all those participating in the event and therefore competitors are advised that First Aid personnel are the final arbitrators as to your continuation in the event for health reasons and to disregard their directions may mean exclusion by the Event Director.
- The organisers reserve the right to reject or cancel any entry to the race at anytime, for any reason including but not limited to; ignoring official's instruction, medical concerns and unsportsmanlike behaviour.
- This is a demanding event. The event organisers cannot guarantee your safety. Possible risks include injury and/or drowning, due to being hit by other persons, objects or boats, other hazards include, rips, rocks, sandbars, blue bottles, stingrays and sharks. Competitors enter at their own personal risk and are responsible for their own physical condition.

**Duke's Paddle Challenge is part of the
annual Duke's Day event held at Freshwater Beach**

Contact: info@dukesday.com